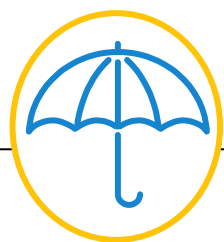


Universal Health Coverage in the WHO African Region





An assignment with a long history

Feb 2015 WHO concept note

“Assessment of the status of UHC determinants including the status of progress on the 2008 Ouagadougou and Algiers Declarations”

Oct 2015 Inception report

Agreement with WHO AFRO to collect data on 54 indicators in four categories

Jan - Apr 2016 Database review by WHO COs

Sep 2016 Alignment with Global UHC monitoring framework

Nov 2016 Final report

Mar 2017 Dashboard



Universal Health Coverage

Target for the UN sustainable development goal 3.8:

‘achieve universal health coverage, including financial risk protection, access to quality essential health-care services and access to safe, effective, quality and affordable essential medicines and vaccines for all’

Development of an African monitoring framework in parallel with the development of a global monitoring framework



Indicator for financial risk protection

- Fraction of the population protected against catastrophic/impoverishing out-of-pocket health expenditure
- Number of people covered by health insurance or a public health system per 1,000 population
- **Proportion of the population with large household expenditures on health as a share of total household expenditure**
- Out-of-pocket expenditure as a proportion of total health expenditure



Indicators for essential health service coverage

RMNCH

- Satisfied need for family planning
- Antenatal care and skilled birth attendance
- Immunisation coverage
- Health seeking for childhood pneumonia

Infectious Diseases

- Tuberculosis treatment
- HIV antiretroviral treatment
- Malaria prevention
- Improved water and sanitation

NCDs

- Hypertension treatment
- Diabetes treatment
- Non-use of tobacco

Capacity & Access

- Basic hospital access
- Health worker density
- Compliance with international health regulations

UNIVERSAL HEALTH COVERAGE DATA PORTAL

Supporting the Universal Health Coverage Coalition

REPRODUCTIVE, MATERNAL, NEWBORN, AND CHILD HEALTH

Family
planning
>

Antenatal
and delivery care
>

Full child
immunization
>

Health-seeking behaviour
for child illness
>

INFECTIOUS DISEASES

Tuberculosis
effective treatment
>

HIV
antiretroviral treatment
>

Insecticide-treated nets
coverage for malaria
prevention
>

Adequate
sanitation
>

NONCOMMUNICABLE DISEASES

Prevalence of
raised blood pressure
>

Prevalence of
raised blood glucose
>

Cervical cancer
screening
>

Tobacco
control
>

SERVICE CAPACITY AND ACCESS

Basic hospital
access
>

Health-worker
density
>

Access to essential
medicines
>

Compliance with the
International Health
Regulations
>

WHO DATA PORTAL FOR
UHC LAUNCHED IN 2017

<http://apps.who.int/gho/cabinet/uhc.jsp#>

METHOD OF CALCULATING SERVICE COVERAGE INDICES

	African Framework	Global Framework
Indicators	14 indicators	16 indicators / some differences
Indicator values	0% to 100%	same
Indicator sources	National surveys & global databases	mostly the same / differ for some indicators
Indicator calculations	Equity adjusted	no / equity presented in a separate dataset
Category aggregation	Geometric mean of indicators in the same category	No aggregation
Aggregation of categories	Geometric mean of categories	No aggregation



Family planning

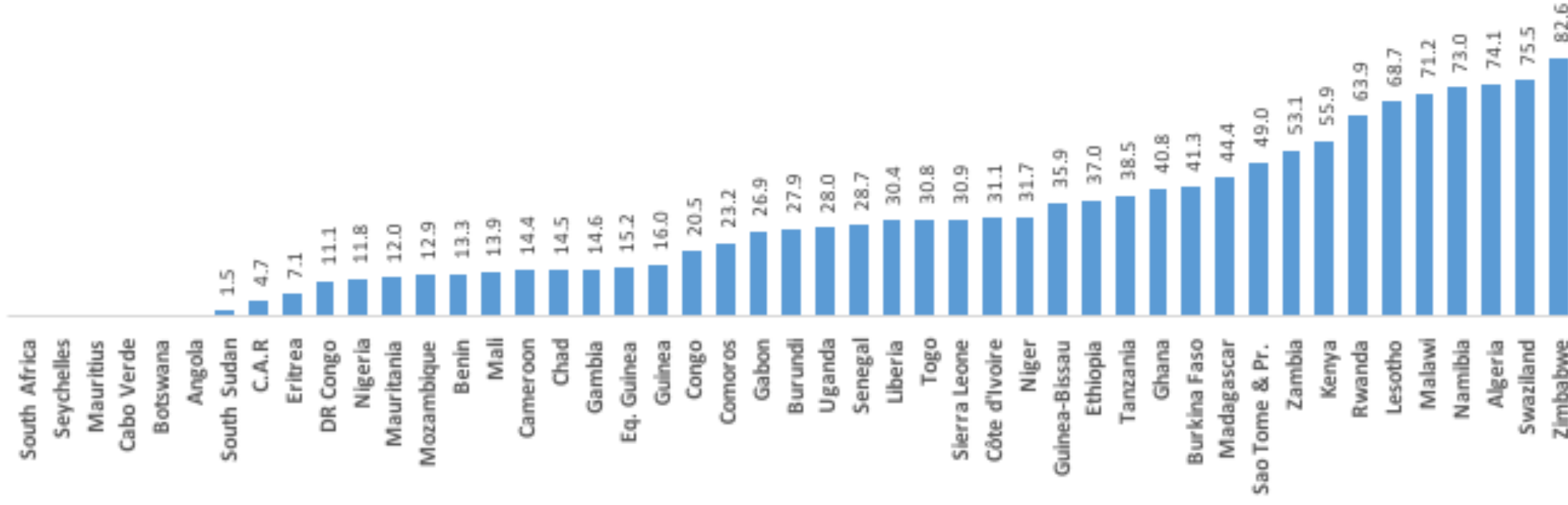
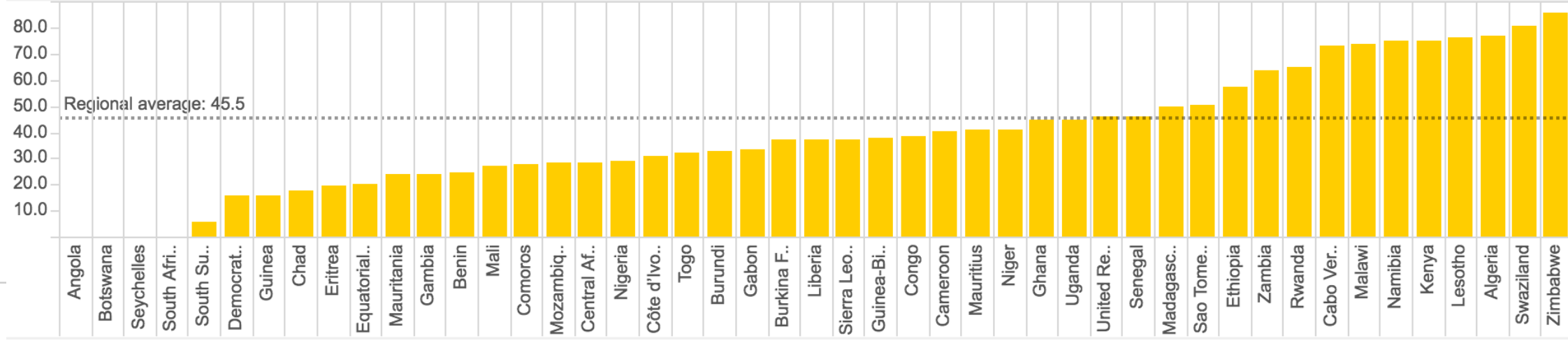
Satisfied need for family planning – data from most recent population surveys

Calculation	$\frac{\text{current use of modern contraception}}{\text{contraceptive prevalence} + \text{total unmet need}}$
Equity Index	$\frac{\text{mean satisfied demand among the two lowest wealth quintiles}}{\text{total satisfied demand}}$
Adjustment	Indicator value multiplied by equity index

Data from 41/47 countries: Regional average 34% (44% without adjustment)

Global Database

Modelled data from UN Population Division (43/47 countries): average 46%





Antenatal care and skilled birth attendance

Mean ANC 4 and SBA – data from most recent population survey

Calculation	$\frac{\% \text{ women with } \geq 4 \text{ ANC visits} + \% \text{ women who delivered with SBA}}{2}$
Equity Index	$\frac{\text{mean SBA coverage among women in the two lowest wealth quintiles}}{\text{total SBA coverage}}$
Adjustment	Indicator value multiplied by equity index

Data from 42/47 countries: Regional average 44% (61% without adjustment)

Global Database

4 ANC visits only (44/47 countries): average 57%



Immunisation coverage

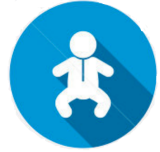
All recommended vaccines by age 1 year – data from most recent population survey

Calculation	$\frac{\text{children aged 12 – 23 months who were fully immunised by age 12 months}}{\text{living children age 12 – 23 months}}$
Equity Index	$\frac{\text{mean \% fully immunised children among the two lowest wealth quintiles}}{\text{\% fully immunised children}}$
Adjustment	Indicator value multiplied by equity index

Data from 42/47 countries: Regional average 53% (60% without adjustment)

Global Database

DTP coverage only: no regional average provided



Health seeking for children

Correct treatment with antibiotic for pneumonia – most recent population survey

Calculation	$\frac{\text{children < 5 with cough, rapid breathing fever in the last 2 weeks who were treated with an antibiotic}}{\text{children < 5 with cough, rapid breathing \& fever in the last 2 weeks}}$
Equity Index	$\frac{\text{mean treatment coverage in the lowest two wealth quintiles}}{\text{total coverage with antibiotic treatment}}$
Adjustment	Indicator value multiplied by equity index

Data from 35/47 countries: Regional average 34% (39% without adjustment)

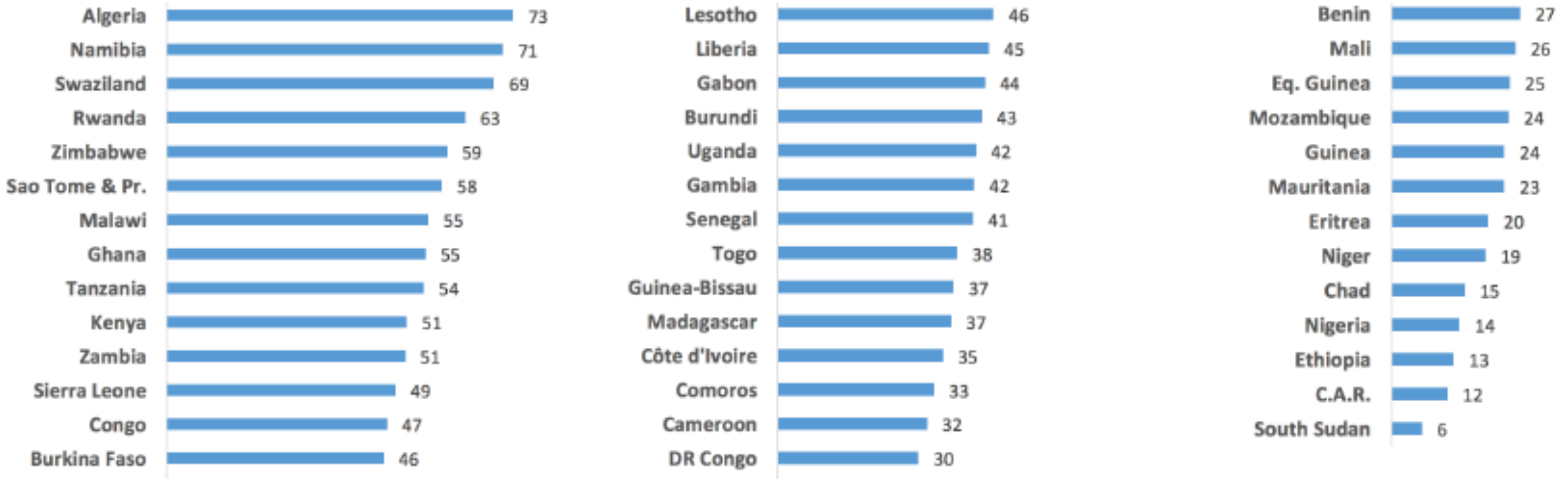
Global Database

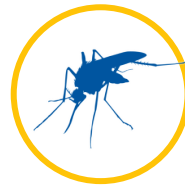
Children treated in health facility or appropriate provider (42/47 countries): average 50%



RMNCH Index

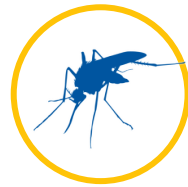
Coverage index for 42/47 countries: 33/100





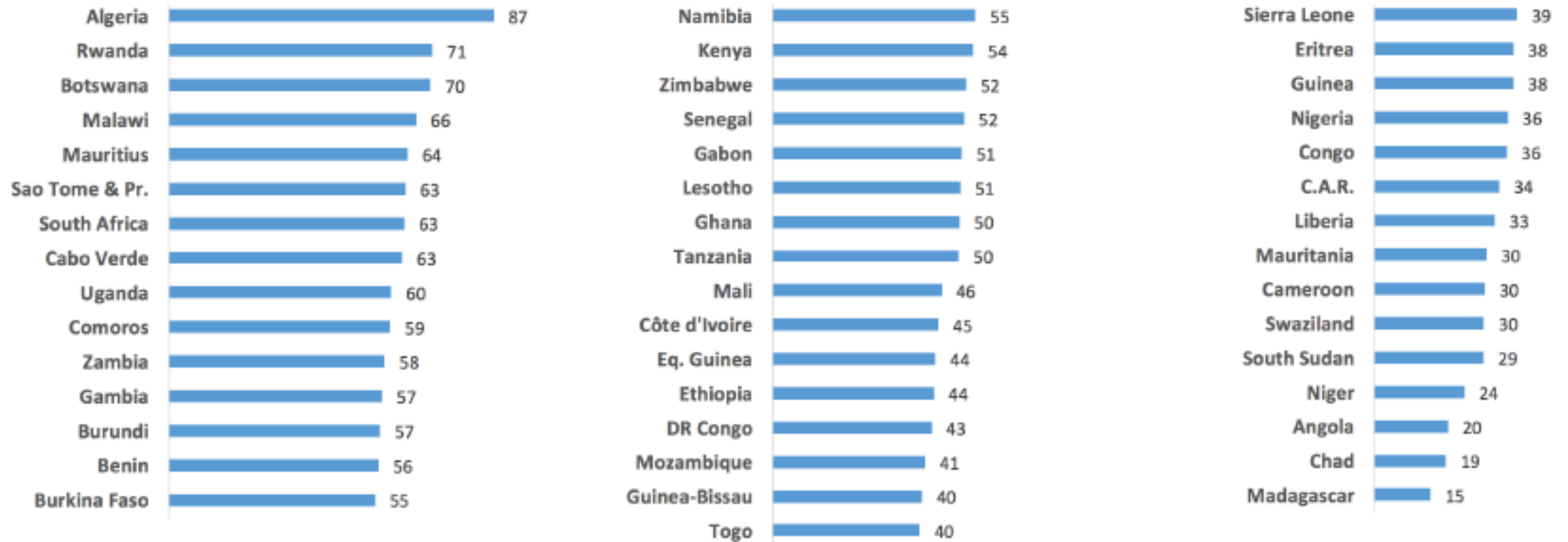
Infectious Disease Index

- **Tuberculosis treatment**: Treatment success rate of new cases
 - WHO TB Database – 47/47 countries – no equity adjustments - regional average 79%
- **HIV treatment**: % of people living with HIV who receive antiretroviral treatment
 - UNAIDS Database – 41 countries – no equity adjustment – regional average 44%
- **Malaria prevention**: % of children <5 at risk protected by an ITN or IRS
 - Most recent population survey – 38/47 countries – equity adjusted average 43%
- **Water and sanitation**: Mean value of (a) % people with access to improved water and (b) % people with access to improved sanitation
 - WHO/UNICEF Database – 47/47 countries – rural/urban equity adjusted average 39%



Infectious Disease Index

Coverage index for 46/47 countries: 46/100





Non-communicable diseases

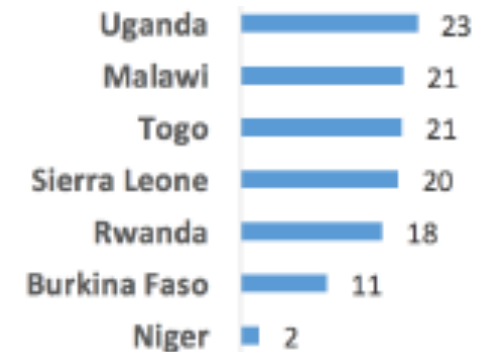
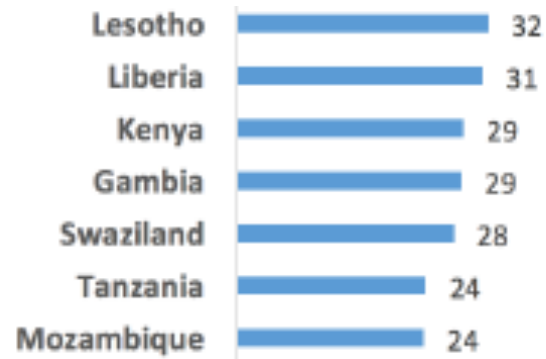
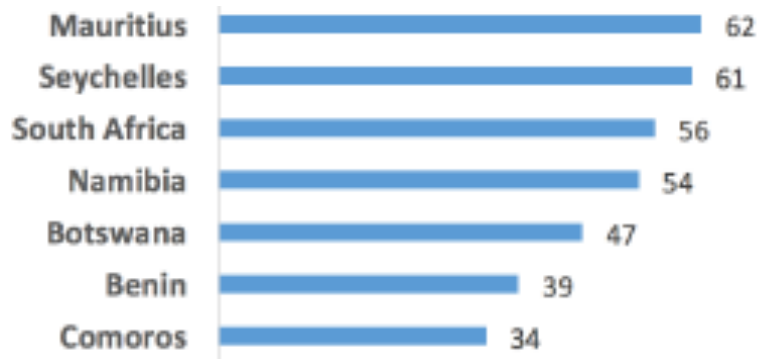
- **Hypertension treatment**: 21/47 countries – average 17%
 - National survey data on prevalence found for 24/47 countries (some quite old e.g. 2002)
 - Global database uses prevalence estimates based on surveys and models (47/47)
 - Only 21 surveys allow calculation of ‘currently on treatment’
- **Diabetes treatment**: 8/47 countries – average 28%
 - National survey data on prevalence found for 19/47 countries
 - Global database uses prevalence estimates based on surveys and models (47/47)
 - Only 8 surveys allow calculation of ‘currently on treatment’
- **Tobacco – non use**: 28/47 countries – all tobacco – equity adjusted – average 79%
 - Survey data available from 43/44 countries – only 29/44 have data for equity adjustment
 - Different formula for equity adjustment
- **Cervical cancer screening**: Data only from 3/47 countries



Non-communicable diseases

Coverage index for 21/47 countries: 29/100

- Labile estimate because of data gaps and large difference between indicator values
- Countries with data on hypertension and diabetes treatment but no data on tobacco non-use scored very low
- Adjustment by applying regional tobacco non-use statistics (79%) to these countries





Service capacity and access

- **Basic hospital access**

- Global database uses beds/10,000 population
- Proposed indicator is Caesarean section rate – equity adjusted – 15% C-Section = 100%
- Data from recent population surveys - 41/47 countries – average 22%

- **Health worker density**

- Global database uses physicians per 1,000 population
- Proposed indicator is achievement of 2.3 nurses, midwives and doctors per 1,000 (100%)
- Data from AFRO HRH database – 47/47 countries – average 45%

- **International health regulations**

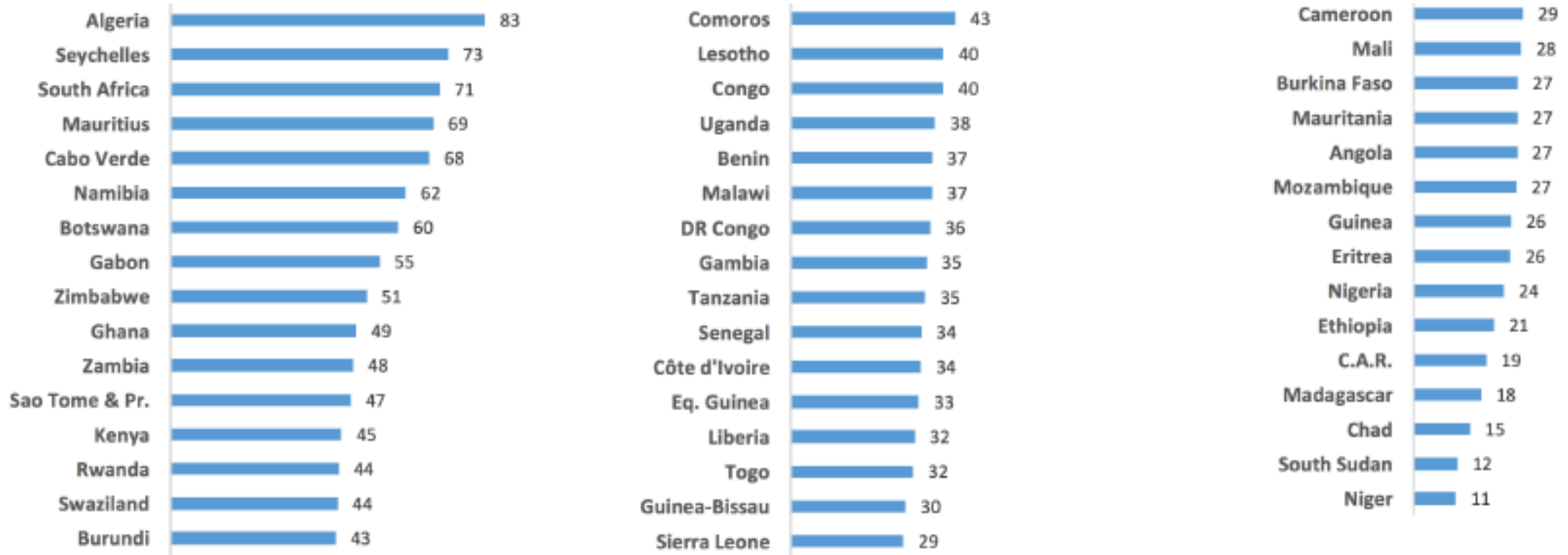
- Average of 13 self-reported capacity scores (WHO IHR data 2014) 47/47 countries – average 58%
- Same as global database (updated to 2016)

- **Access to essential medicines:** Insufficient comparable data sources



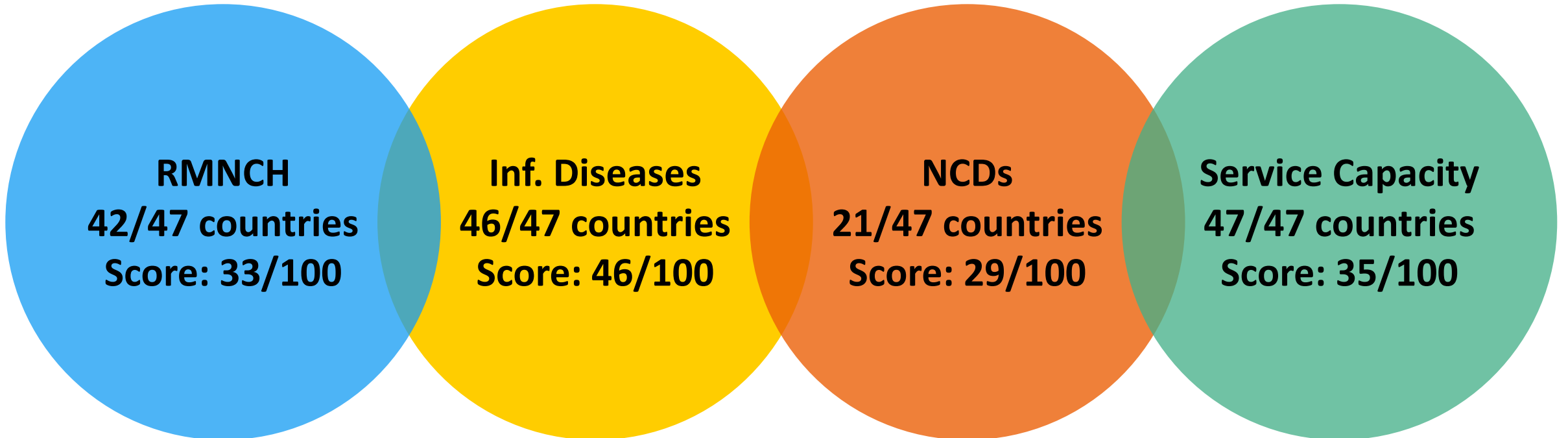
Service capacity and access

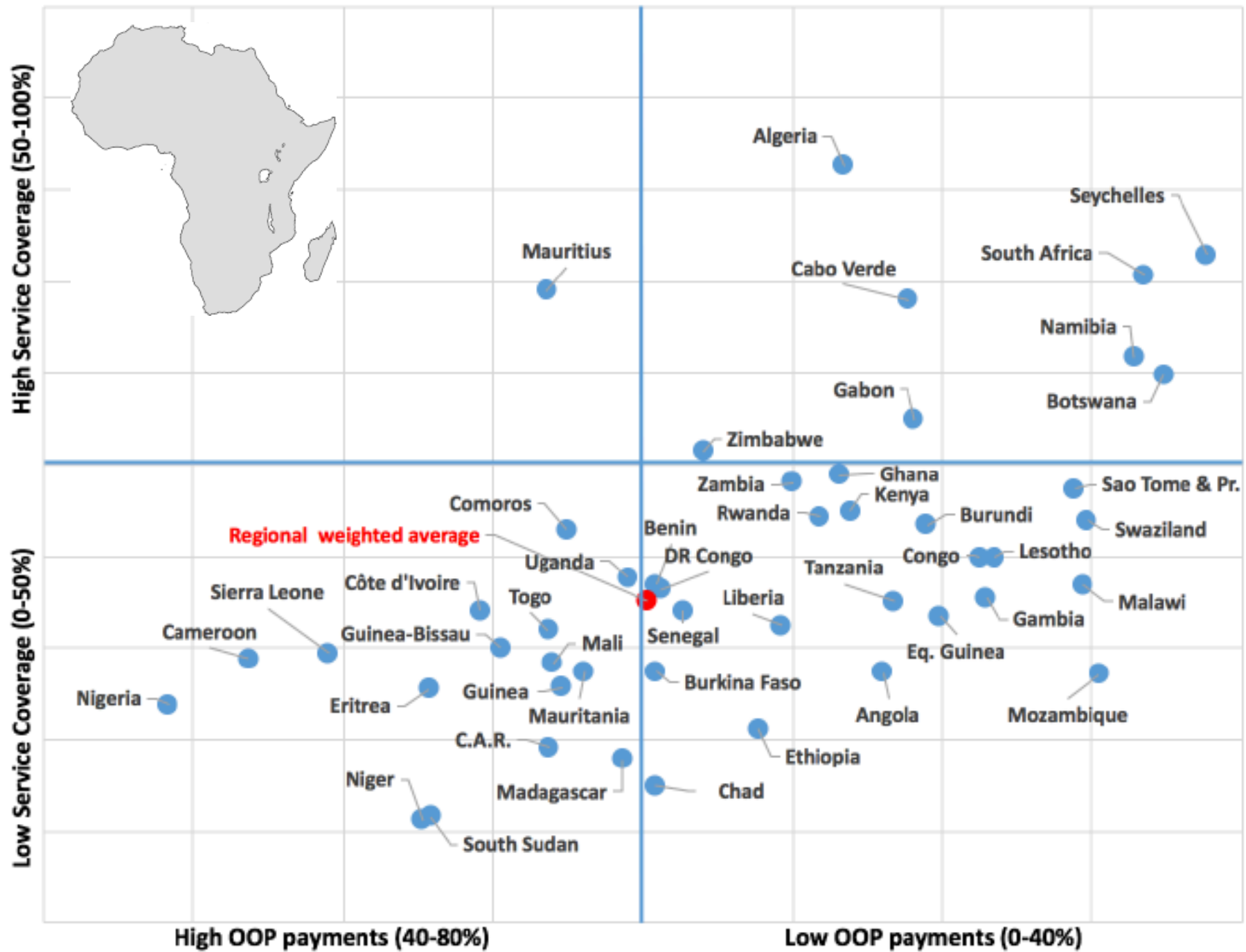
Service coverage index for 47/47 countries: 35/100

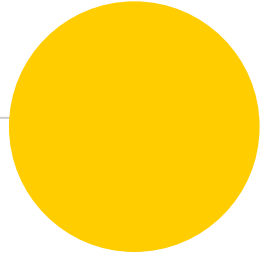




Health service coverage indices







Thank You!

Any questions ?

Josef.decosas@hera.eu

6. November, 2017